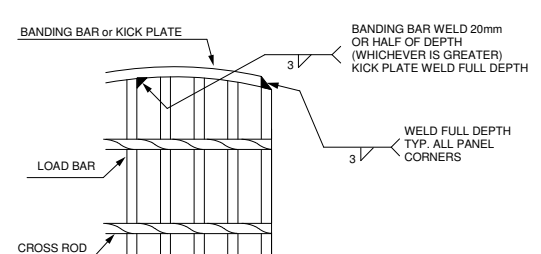
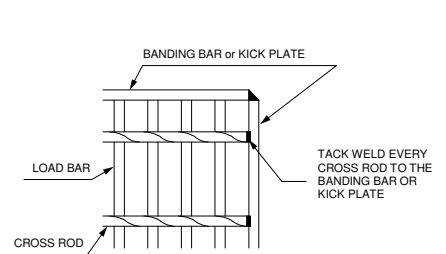


**END BANDING**

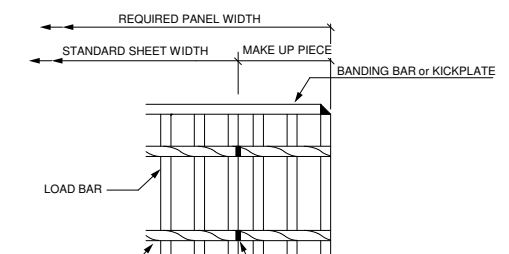


**SPLAY BANDING**

MAX DISTANCE BETWEEN WELDS 150mm

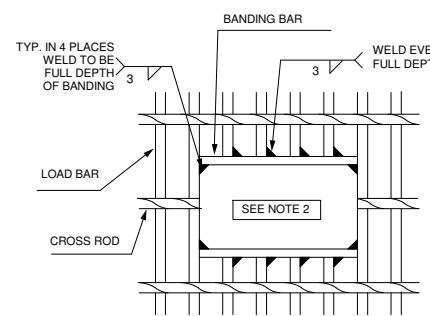


**SIDE BANDING**

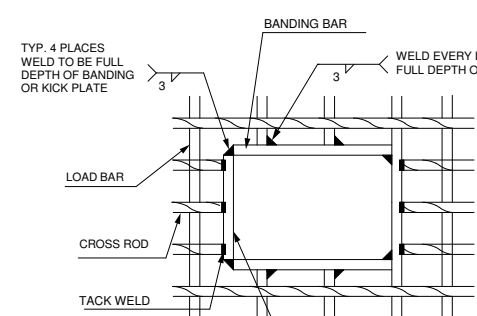


**SIDE JOINING**

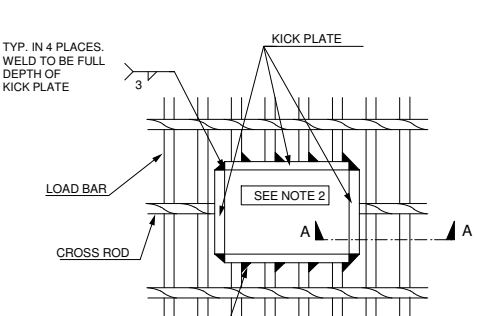
WELD ONE SIDE OF EVERY 5th LOAD BAR FOR A & B GRATING  
 WELD ONE SIDE OF EVERY 4th LOAD BAR FOR C & D GRATING  
 WELD ONE SIDE OF EVERY 3th LOAD BAR FOR E & F GRATING  
 WELD ONE SIDE OF EVERY LOAD BAR FOR DRAINAGE GRATING



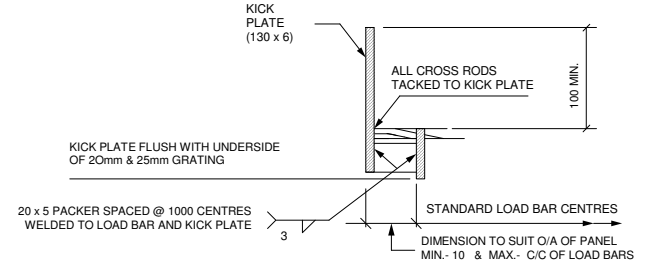
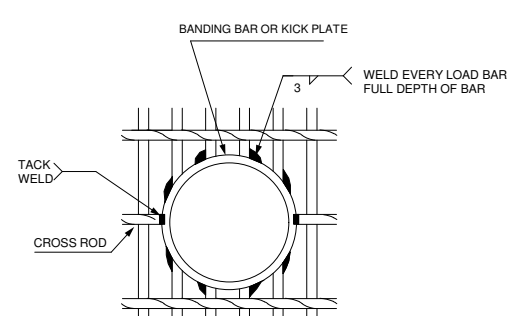
**A, B, C & D PATTERNS**



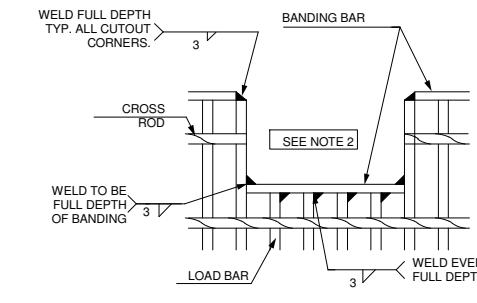
**E & F PATTERNS**



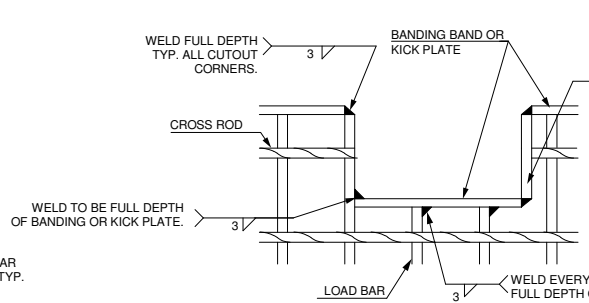
**GRATING PENETRATIONS**



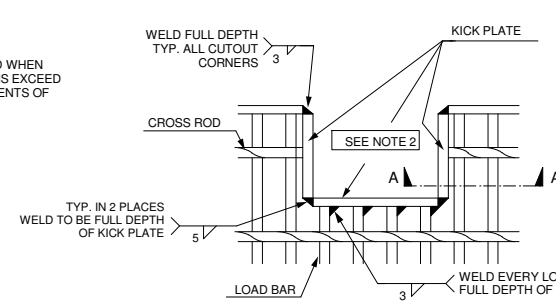
**KICK PLATE WELDED PARALLEL TO LOAD BAR**



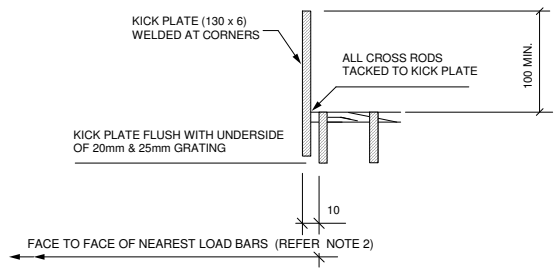
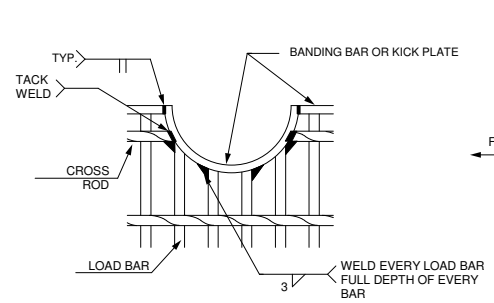
**C & D PATTERNS**



**F PATTERN**



**GRATING CUT - OUTS**

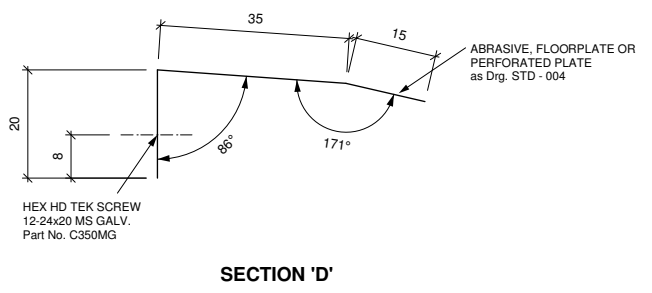
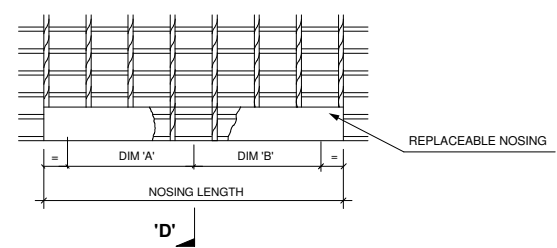
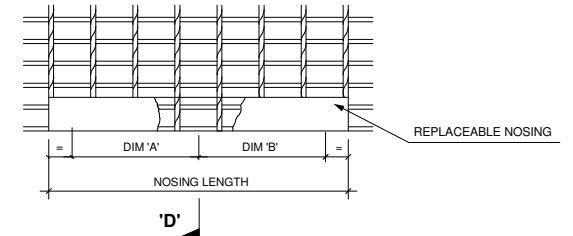


**SECTION A-A**

- NOTES**
1. THESE DETAILS TO APPLY U.O.N. ON GRATINGDETAIL AND/OR LAYOUT DRAWINGS
  2. ALL PENETRATIONS AND CUT-OUTS WILL BE ENLARGED TO THE NEAREST LOAD BAR WHEN THEY FALL WITHIN 40MM OF THAT LOAD BAR
  3. NO WELDS TO PROTRUDE BELOW U/S OF GRATING
  4. ALL BANDING BARS TO BE 5mm THICK ALL KICK PLATE TO BE 6mm THICK
  5. BANDING WILL BE IN PLAIN MATERIAL UNLESS SPECIFIED OTHERWISE
  6. WELD SIZE 3mm IS MINIMUM REQUIREMENT
  7. EDGE BARS BETWEEN SIDE CUT AND JOINED SERRATED PANELS MUST BE SERRATED.

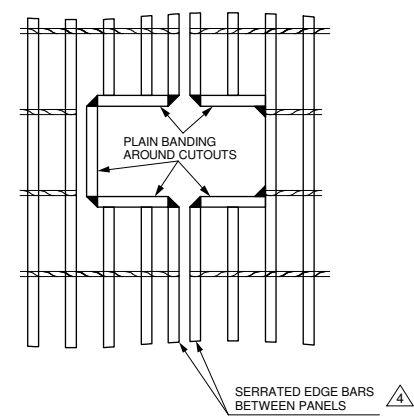
PREFIX	LENGTH	DIM 'A'	DIM 'B'
NAB NFP NPP	560	475 (NO MD FIXING)	
NAB NFP NPP	730	300	325
NAB NFP NPP	860	375	400
NAB NFP NPP	1030	450	475
NAB NFP NPP	1180	525	550

CODE eg NAB580MG (ie. MS, GALV)



**SECTION 'D'**

**REPLACABLE NOSING DETAIL 'A'**



**SERRATED GRATING BANDING**

**FOR GENERAL RELEASE**

REV	PARTICULARS	BY	DATE
4	SERRATED NOTE AND DETAIL ADDED	TH	19/6/18
3	Note 5 Banding Plain/Serrated Deleted.	TH	30/8/17
2	Read details clarified	TW	19/3/14
1	TEXT REVISED & OBSOLETE NOSINGS REMOVED	TW	19/4/07

WEBFORGE GROUP COMPANIES			
CLIENT: STANDARD FABRICATION			
DETAIL: PROCEDURES FOR STEEL GRATING PANELS			
WEBFORGE GRID TYPE	SURFACE TREATMENT	REG'N No.	
DRAWN: JL	CHK	CUST. O.N.	DRAWING No.
DATE: 1/12/92	JOB No.		STD-001
			REV. 4