

FIELD INSTALLATION OF ANCHOR BOLT NUT COVER

INSTALLATION INSTRUCTIONS:

1. ANCHOR BOLT PROJECTION ABOVE TOP OF BASE PLATE MUST BE BETWEEN 3" MINIMUM AND 4" MAXIMUM.
2. FIELD DRILL 25/64" DIAMETER HOLE A MINIMUM OF 1 1/4" DEEP AND CENTERED ON EXISTING ANCHOR BOLT.
3. FILL THE DRILLED HOLE WITH OIL.
4. DRIVE THE 1/4"-20 UNC THREADED INSERT INTO THE DRILLED HOLE UNTIL FLUSH WITH END OF ANCHOR BOLT.
5. PLACE COVER OVER ANCHOR BOLT AND SECURE IN PLACE WITH THE 1/4"-20 UNC x 1 1/2" LONG STAINLESS STEEL HEX HEAD BOLT.

1/4"-20 UNC x 1 1/2" LONG
STAINLESS STEEL HEX BOLT

1/4"-20 UNC
THREADED INSERT

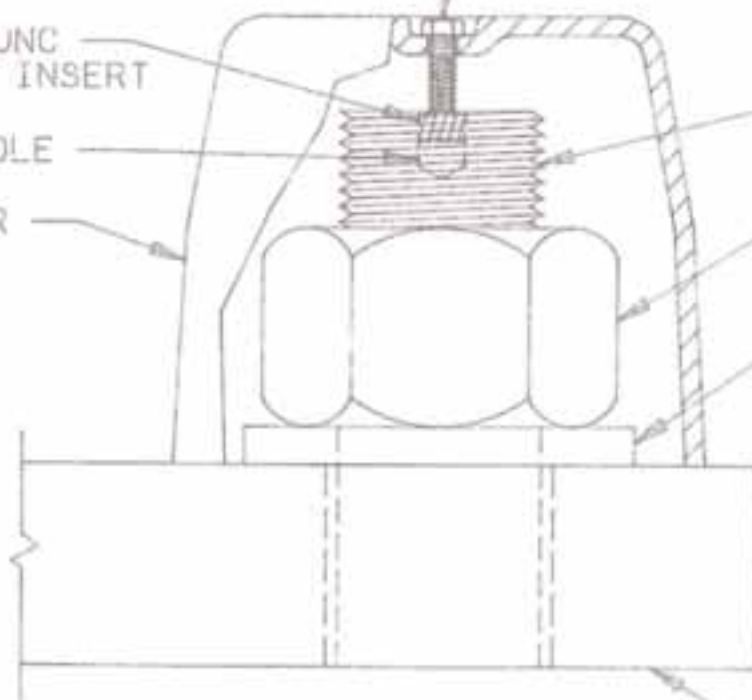
25/64" HOLE

NUT COVER

EXISTING
ANCHOR BOLT

EXISTING
NUT

EXISTING
WASHER



NOTE - IF ANCHOR BOLT CENTER IS LESS THAN 3" FROM
POLE SHAFT, SOME FIELD MODIFICATION (GRINDING)
OF COVER MAY BE REQUIRED TO AVOID BASE WELD
INTERFERENCE.

EXISTING
BASE PLATE