

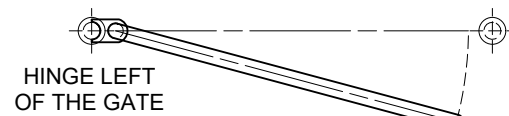
HINGE LEFT  
OF THE GATE



**TOP VIEW**  
ARROW INDICATES PERSON  
STANDING THIS SIDE OF THE GATE

1

**NE SWING**

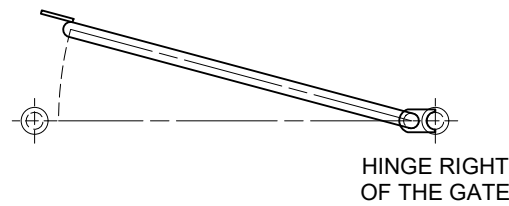


HINGE LEFT  
OF THE GATE



**TOP VIEW**  
ARROW INDICATES PERSON  
STANDING THIS SIDE OF THE GATE

**SE SWING**

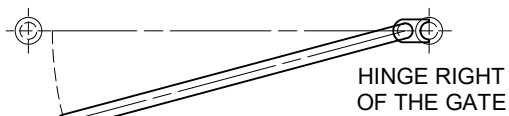


HINGE RIGHT  
OF THE GATE



**TOP VIEW**  
ARROW INDICATES PERSON  
STANDING THIS SIDE OF THE GATE

**NW SWING**

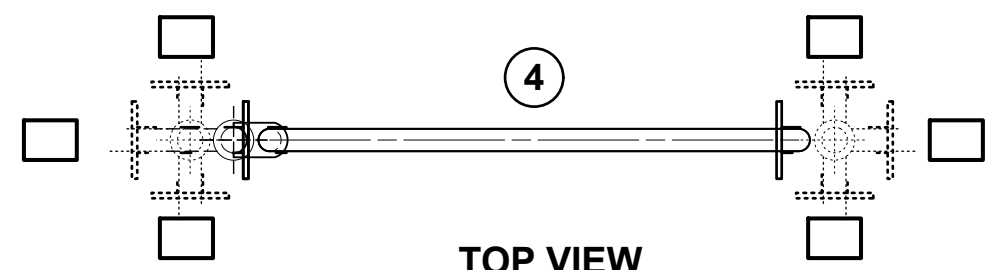


HINGE RIGHT  
OF THE GATE



**TOP VIEW**  
ARROW INDICATES PERSON  
STANDING THIS SIDE OF THE GATE

**SW SWING**



**TOP VIEW**

OFFICE USE ONLY

WO No.:
PD No.:

**WHAT TO DO?** (PLEASE COMPLETE EACH STEP)

- 1 - CIRCLE REQUIRED SWING FOR GATE
- 2 - PROVIDE DIMENSION FOR STANCHION CENTRES AND/ OR GATE CENTRES
- 3 - PROVIDE TYPE OF STANCHION/ S (IF NOT REQUIRED - 'N/A' )  
**\*\*THIS DRAWING ONLY ALLOWS FOR 'S', 'S90', 'SC' & 'SO' ONLY\*\***  
PLEASE REFER TO DRAWING 'STD-SCG-001' FOR OTHER STANCHIONS
- 4 - IF APPLICABLE, CIRCLE STANCHION BASE PLATE POSITION AND TICK THE APPROPRIATE BOX/ BOXES IN RELATION TO THE DIRECTION/ S OF HANDRAIL PIPE/ S
- 5 - IF KICKPLATE IS REQUIRED PLEASE PROVIDE THE HEIGHT OF THE KICKPLATE IN RELATION TO STANCHION/ S  
PLEASE REFER TO THE '**WEBFORGE - ACCESS SYSTEMS**' CATALOGUE,

- 6 - CIRCLE REQUIRED STOPPER FOR GATE

- PROVIDE MATERIAL AND FINISH OF GATE/ S

- NUMBER OF GATE/ S REQUIRED

**NOTES:**

1. HANDRAIL WELDING DETAIL AS PER WEBFORGE STD-101 U.N.O.
2. COMPLIANCE WITH AS1657 REQUIRES MINIMUM WIDTH OF 600MM.
3. MAXIMUM GATE CENTRE SIZE:
  - WITHOUT KICKPLATE TO BE 1064MM CENTRES
  - WITH KICKPLATE TO BE 864MM CENTRES(REFER TO THE 'WEBFORGE ACCESS SYSTEMS' CATALOGUE)

7	STANCHION TYPE & K/P REINSTATED	TH	31/08/20
6	STANCHION TYPE BOX CLEARED	TH	02/04/20
5	NOTES REVISED	TH	13/03/20
REV	PARTICULARS	BY	DATE



A valmont COMPANY

AUSTRALIA

1300 266 666

www.webforge.com.au

info@webforge.com.au

NEW ZEALAND

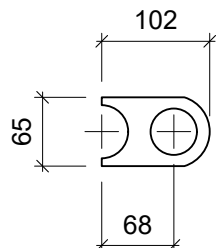
0800 932 367

www.webforge.co.nz

info@webforge.co.nz

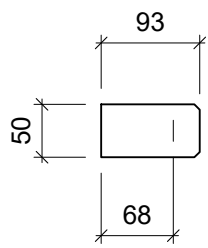
CLIENT: WEBFORGE (ANZ)  
JOB: STANDARD SELF CLOSING GATE - SIDE MOUNTED  
DETAIL: ORDERING/ FABRICATION DETAILS

WEBFORGE GRID TYPE	-	SURFACE TREATMENT	-	REQ'N No.	
DRAWN	JB	CHK	CUST. QIN.	-	DRAWING No.
DATE	03/04/15	JOB No.	-		STD-SCG-002
					7

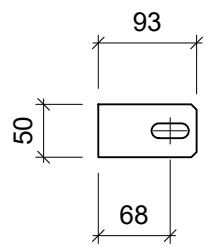


**HINGE DETAIL**

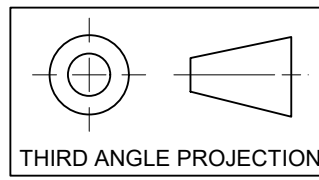
6



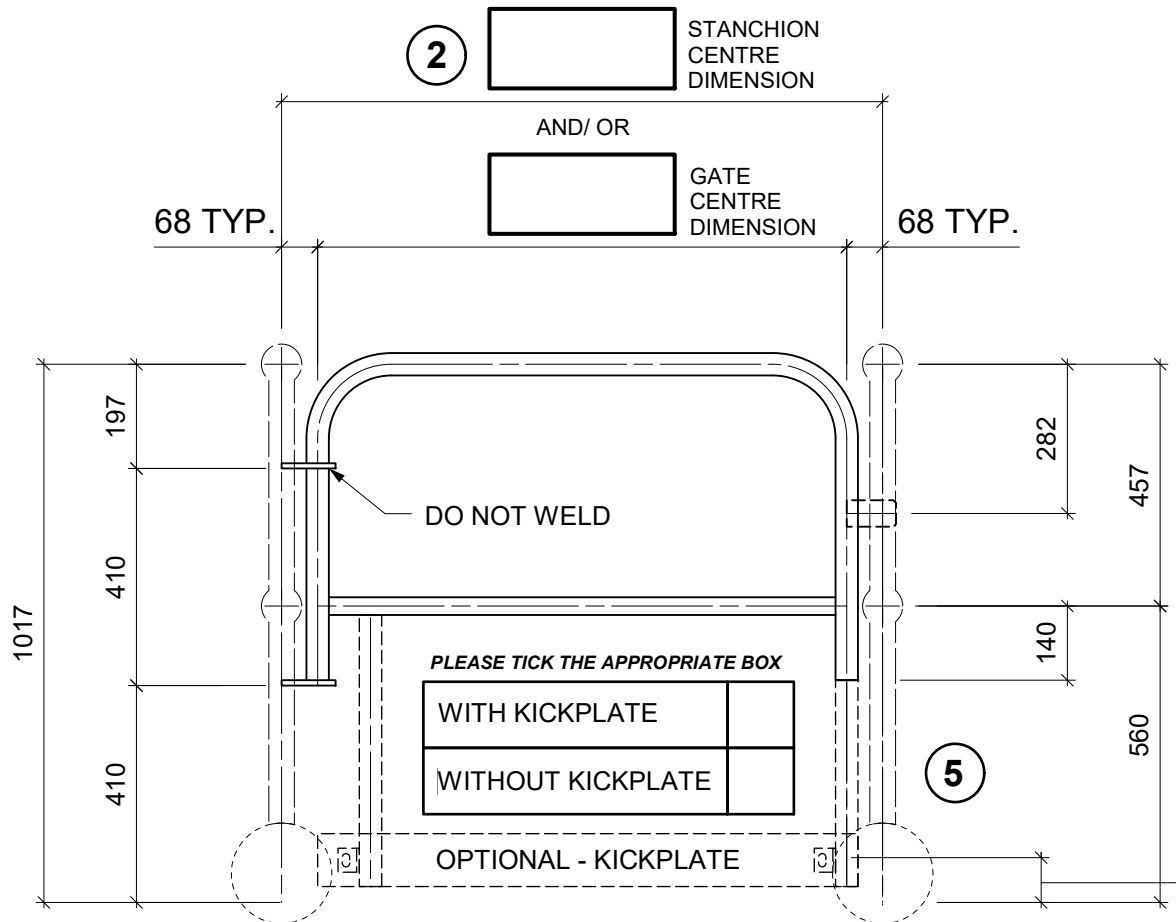
**STANDARD STOPPER DETAIL**



**LOCKABLE STOPPER DETAIL**



THIRD ANGLE PROJECTION



**ELEVATION VIEW**

**KICKPLATE HEIGHT**

**DRAWING DISCLAIMER:**  
WEBFORGE PROVIDES THE INFORMATION CONTAINED IN THIS DRAWING AS A GUIDE FOR YOUR INFORMATION ONLY. WEBFORGE HAS TAKEN REASONABLE CARE TO ENSURE THE ACCURACY OF THE INFORMATION AT THE TIME OF PRODUCTION. WEBFORGE EXPRESSLY DISCLAIMS ALL LIABILITY WHATSOEVER FOR (INCLUDING ANY DIRECT OR INDIRECT LOSS OR DAMAGE, COSTS OR EXPENCES HOWSOEVER INCURRED BY ANY PERSON) RELIANCE ON THE WHOLE OR ANY PART OF THE INFORMATION CONTAINED IN OR OMITTED FROM THIS DRAWING. WEBFORGE RESERVES THE RIGHT TO MAKE TECHNICAL CHANGES WITHOUT NOTICE.