



MONOWILLS
Link



From the market leader in Access systems, **Monowills Link** is a modular range of handrail and balustrade solutions. Monowills stanchions and safety barriers are known and trusted across the Asia Pacific region, and are now complimented by a range of pre-assembled modular stanchions and componentry, allowing you to minimise freight requirements and assemble on site, adjusting to site specifics as required.

**TORX head grub screws
(Primary fixing)**

Link uses TORX head stainless steel grub screws for superior corrosion and vandalism resistance supplied as standard.

**Added security
(2nd optional fixing)**

Link components have a 7mm hole on the rear of each piece for a self driving screw, for those who want added security

**Anti Vibration Screw
(3rd optional fixing)**

The **Link** grub screw allows a self driving screw to pass neatly through the centre pinning the grub screw permanently in place. Perfect for scenarios when vibration may be a factor



Monowills

Look for the Monowills brand on the components, to ensure you have the genuine article.

Reduce Freight

Link can be shipped in easy to manage standard boxes. Save on logistics, compared to fully fabricated systems.

Add Kickplate

The **Link** kickplate bracket is height adjustable and compatible with all stanchion types

Visual Maintenance Inspection

Monowills Link offers the ability to visually inspect the system for movement. Using our plug indicator, any grub screw change is visually detected. No need to physically test each connection.

Proven Quality

The **Monowills Link** system has been tested & independently certified to AS/NZ 1657-2018

Inherent Strength

Link components are made from malleable iron with a tensile strength exceeding 350MPa

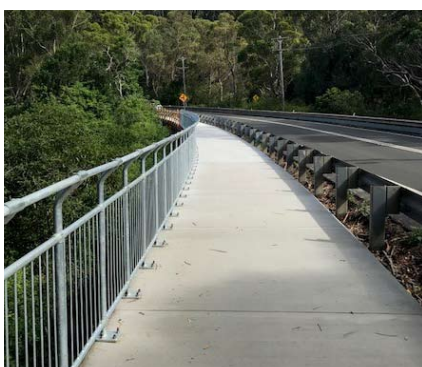


No Welding Required

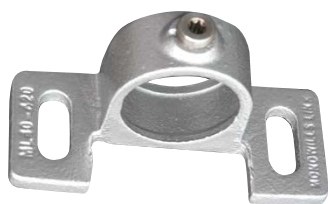
Assemble stanchions and panels using TORX stainless steel grub screws instead of welding. No hot work permits are needed.



Anti Vibration Screw



Accessories



Kickplate Bracket
ML40-420



Stainless Steel Grub Screw*
* Screws supplied with components.
ML40-430



Indicator Plug
ML40-431



TORX T45 S
ML40-433



TORX T45 D
ML40-432



TORX T45 Key
ML40-434

Assembled Stanchions

Over 200 compliant stanchion configurations available



Platform	
Base:	Modular
40 NB	ML40-P
32 NB	ML32-P
Welded	
40 NB	ML40-PW
32 NB	ML32-PW
In ground	
40 NB	ML40-I
32 NB	ML32-I



Platform DOSO	
Base:	Modular
40 NB	ML40-P-DOSO
32 NB	ML32-P-DOSO
Welded	
40 NB	ML40-PW-DOSO
32 NB	ML32-PW-DOSO
In ground	
40 NB	ML40-I-DOSO
32 NB	ML32-I-DOSO



Platform Angle	
Base:	Modular
40 NB	ML40-PA
32 NB	ML32-PA
Welded	
40 NB	ML40-PAW
32 NB	ML32-PAW
In ground	
40 NB	ML40-IA
32 NB	ML32-IA



Side	
Base:	Modular
40 NB	ML40-S
32 NB	ML32-S
Welded	
40 NB	ML40-SW
32 NB	ML32-SW



Side Angle	
Base:	Modular
40 NB	ML40-SA
32 NB	ML32-SA
Welded	
40 NB	ML40-SAW
32 NB	ML32-SAW



Side DOSO	
Base:	Modular
40 NB	ML40-S-DOSO
32 NB	ML32-S-DOSO
Welded	
40 NB	ML40-SW-DOSO
32 NB	ML32-SW-DOSO



Angle Mount

Base: Welded

40 NB ML40-AMW
32 NB ML32-AMW

Base Plate welded at specified angle, between 5° - 45°



Corner

Base: Welded

40 NB ML40-CW
32 NB ML32-CW



Options:

Modular Base Plate

Adjust as required on site.



Welded Base Plate (W)

Added security, ideal for angled stanchions



In ground stanchions (I)

For installing directly into the ground



With Kickplate (K) Mounting Bracket

If you need kickplates, add mounting brackets to your stanchions. Adjustable to any height.



Side Conveyor

Base: Modular

40 NB ML40-SC
32 NB ML32-SC

Welded

40 NB ML40-SCW
32 NB ML32-SCW



Side Conveyor DOSO

Base: Modular

40 NB ML40-SC-DOSO
32 NB ML32-SC-DOSO

Welded

40 NB ML40-SCW-DOSO
32 NB ML32-SCW-DOSO



Side Offset

Base: Welded

40 NB ML40-SOW-110
32 NB ML32-SOW-110
40 NB ML40-SOW-130
32 NB ML32-SOW-130



Monowills Link includes a modular Velocity Cycle rail option, allowing fast and easy assembly of bike safe railing.

The Link version of Velocity can be adjusted on site to suit cycle paths and or walkways with uneven ground levels. Velocity keeps cyclists safe; the indented top rail prevents pedals being caught up in balustrades or knee rails in accordance with Austroads guidelines.

Pre-assembled stanchions:

	WELDED	IN GROUND
2 Rail	ML40-PW-VEL2	ML40-IG-VEL2
	ML32-PW-VEL2	ML32-IG-VEL2
3 Rail	ML40-PW-VEL3	ML40-IG-VEL3
	ML32-PW-VEL3	ML32-IG-VEL3
Balustrade	ML40-PW-VELB	ML40-IG-VELB
	ML32-PW-VELB	ML32-IG-VELB

Balustrades



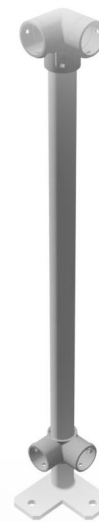
Balustrade Platform

Base:	Modular
40 NB	ML40-BP
32 NB	ML32-BP
Welded	
40 NB	ML40-BPW
32 NB	ML32-BPW
In ground	
40 NB	ML40-BI
32 NB	ML32-BI



Balustrade Platform DOSO

Base:	Modular
40 NB	ML40-BP-DOSO
32 NB	ML32-BP-DOSO
Welded	
40 NB	ML40-BPWDOSO
32 NB	ML32-BPWDOSO
In ground	
40 NB	ML40-BI-DOSO
32 NB	ML32-BI-DOSO



Balustrade Corner

Base:	Modular
40 NB	ML40-BCW
32 NB	ML32-BCW
in ground	
40 NB	ML40-BIC
32 NB	ML32-BIC

Balustrade Panel

	40NB	32NB
900mm	ML40-BAL900	ML32-BAL900
1800mm	ML40-BAL1800	ML32-BAL1800





Compliant Handrail

The popularity of Modular Handrail is skyrocketing...and it's easy to understand why. Its strong, cost effective, adjustable during installation and incredibly efficient to transport. With that said...

“pipe fittings alone don’t make compliant handrail”

How you use those components, in what configurations and in what applications is critical. If you have experience with common barrier Standards & Building Codes you'll understand just how much detail there is to sift through to ensure compliance on your next project. Most importantly, none of the detail outlined in these specifications relate to loose modular components...but rather the implied loads & dimensional requirements of the complete and installed barrier.

“It’s the complete handrail system that needs to comply, not the loose modular components”

This is an important distinction, as the adjustable nature of modular fittings bring with it the temptation to create custom handrail designs...and in turn, the risk of undermining your specification in the process.

To combat this, the Webforge range boasts over 200 Monowills LINK stanchions...each of which have been tested and independently certified to meet not only the load requirements, but also the rail positioning and clear opening requirements of the most common barrier standards & codes. Additionally, Webforge are able to provide guidance on allowable stanchion spacing, the proper use of bends and fixing methods to ensure your finished & installed modular handrail is **compliant modular handrail**.

In addition to the compliant stanchion infrastructure Webforge offer a drafting & detailing service that can assess your design against specification and provide you with a certificate of compliance for the completed handrail. For more information on how to stay compliant, please contact your local Webforge Locker Sales team.

Testing & Compliance:

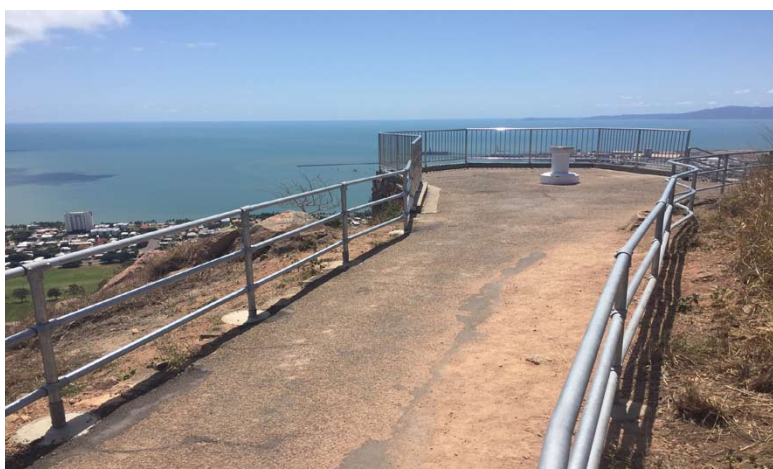
Link Casts	Our Link Casts have been rigorously tested and independently certified. Material certificates and metallurgy testing is completed on every batch to ensure quality and consistency. Certificates can be supplied on request.
Assembled Stanchions	Webforge have developed a series of stanchions kits, that when assembled in accordance with our assembly instructions, meet the requirements of AS1170.1 Clause 3.6 Table 3.3 and AS1657:2018
5 Year Warranty	Monowills Link has all the benefits of a modular system with the durability of a permanent handrail solution. When installed as per our instructions we offer a Warranty of 5 years from date of purchase **conditions apply

Pipe:

Stanchions	40NB
OD	48.3mm
Thickness	3.2mm
Rails	40NB
OD	48.3mm
Thickness	3.2mm
Rails	32NB
OD	42.4mm
Thickness	3.2mm

Material / Spec:

Pipe	Q235B or higher
Link Casts Material	Malleable Iron
Link Cast Strength	Min 350 Mpa
Galvanizing Cast	AS/NZS 4680:2006
Grub Screw (TORX)	Stainless Steel 304
Plastic Plug	EPDM rubber polyolefin UV stabilised for external use



Australia

webforge.com.au

info@webforge.com.au

1300 266 666

New Zealand

webforge.co.nz

nz_sales@webforge.co.nz

0800 932 367