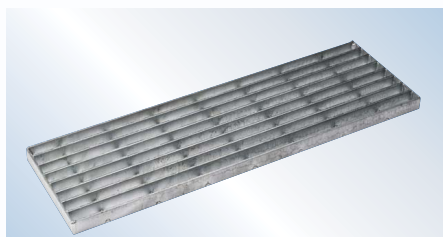
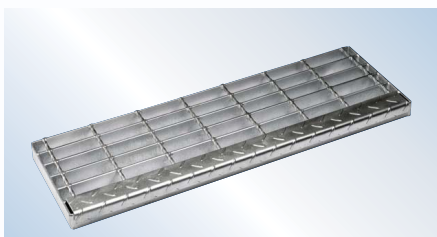


Stair Treads

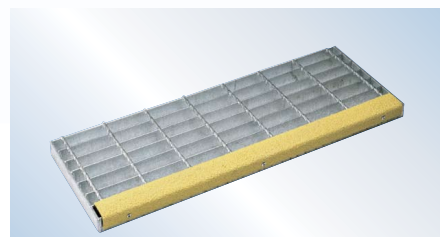
Steel



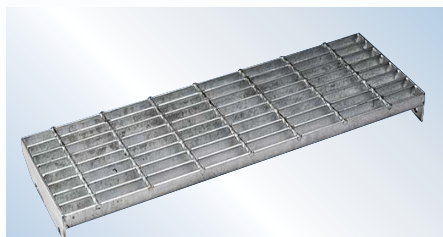
T1 – Welded Fixing, No Nosing



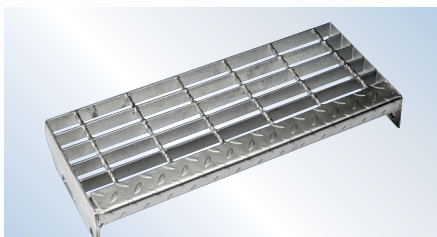
T3 – Welded Fixing, Floor plate Nosing



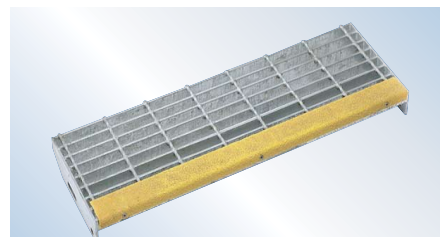
T5 – Welded Fixing, Abrasive Nosing



T2 – Bolted Fixing, No Nosing

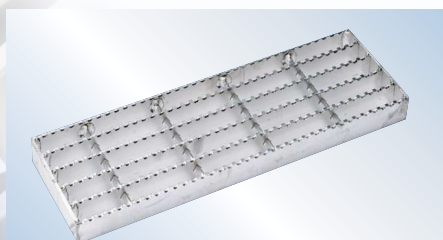


T4 – Bolted Fixing, Floor plate Nosing

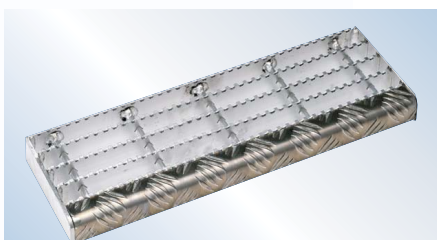


T6 – Bolted Fixing, Abrasive Nosing

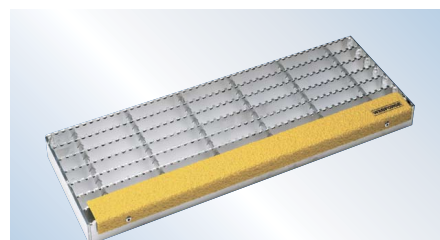
Aluminium



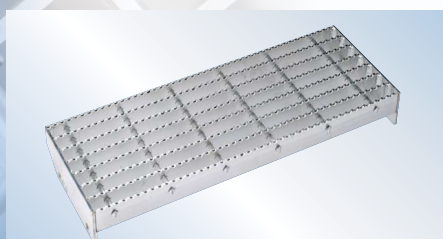
T1 – Welded Fixing, No Nosing



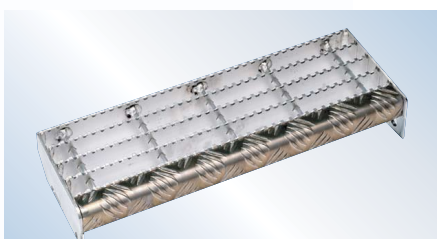
T3 – Welded Fixing, Floor plate Nosing



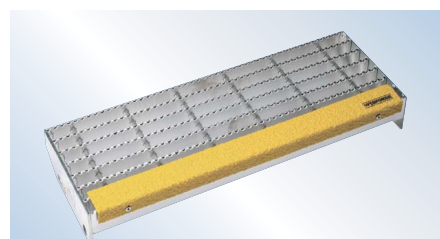
T5 – Welded Fixing, Abrasive Nosing



T2 – Bolted Fixing, No Nosing



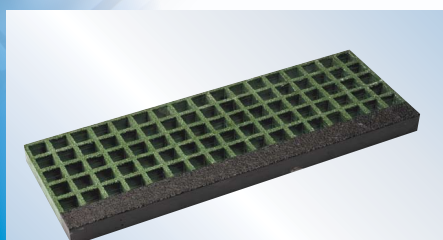
T4 – Bolted Fixing, Floor plate Nosing



T6 – Bolted Fixing, Abrasive Nosing

FRP

AS1657 requires that the nosing of the tread is clearly visible against the background.



Bolted Fixing, Abrasive Nosing

Also available in Mini Mesh.

Stair Treads

The tables below indicate the maximum width and length for stair treads, depending on the combination of material, pattern and load bar selected. Standard stair treads are available ex-stock from Webforce locations; these standard profiles are complimented by a custom manufacturing service.

Recommended Maximum Lengths for Grating Patterns

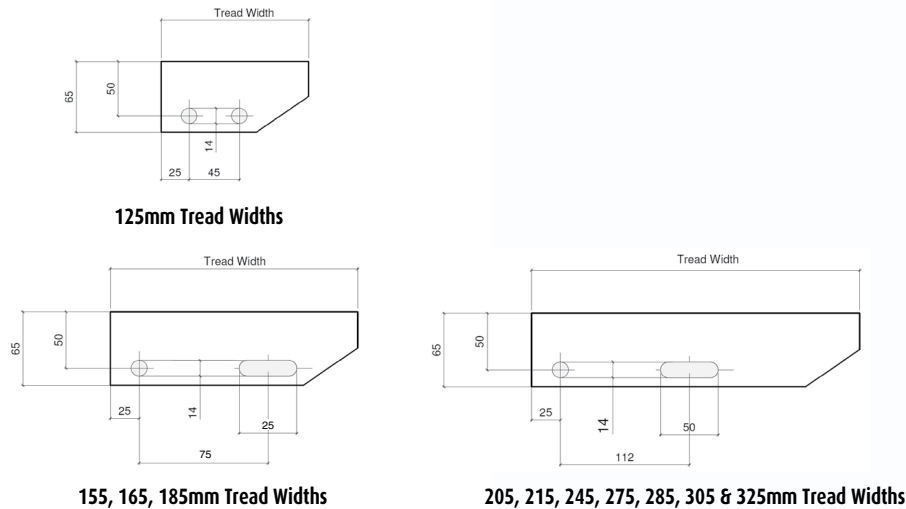
	Steel			Aluminium			FRP	
Load Bar Size	25 x 5	32 x 5	40 x 5	25 x 5	32 x 5	40 x 5	25 x 6	38 x 6
A & B Pattern	900	1300	1600	550	900	1275	-	-
C & D Pattern	750	1200	1500	-	675	1050	-	-
F Pattern	550	850	1350	-	450	700	-	-
G Pattern	-	-	-	-	-	-	600	875

Recommended Maximum Tread Widths for Grating Patterns

A & B Pattern	125	155	185	215	245	275	305
C & D Pattern	125	165	-	205	245	285	325
F Pattern	125	-	185	-	245	-	305
G Pattern	-	-	-	-	234	272	310

End Plates

The standard tread end plates for the different width stair treads are shown below. Tread end plates are manufactured from 65 x 5 flat bar. For load bars > 40mm depth, special end plates are required.



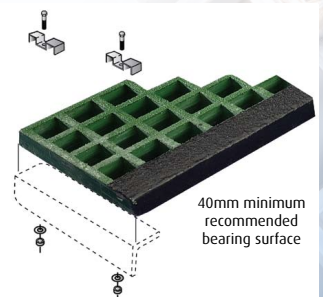
Note: All end plates sniped at 34° unless requested otherwise

Drilling Stringers:

Please find below a table of recommended stair stringer hole centres.

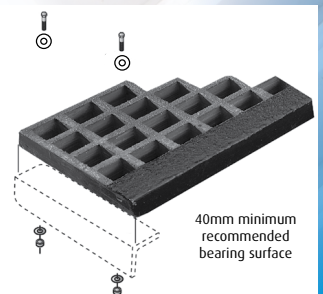
Table of recommended stair stringers drilling for M12 bolts

Tread width mm	Recommended stringer hole centres mm	Hole size mm
125	45	14 dia
155, 165, 185	75	14 dia
205, 215	100	14 dia
245, 275, 285, 305, 325	125	14 dia



Standard FRP Treads

Attach with:
Top Saddle: C129SM
Screw: C301SM
4 clips per tread (angle not supplied)



Minimesh Treads

Predrill angle with 7.4 Hole
Attach with: Disc C140SM
Top Saddle: C129SM
Thread Rolling Screw: C309SM
4 clips per tread (angle not supplied)



A valmont COMPANY