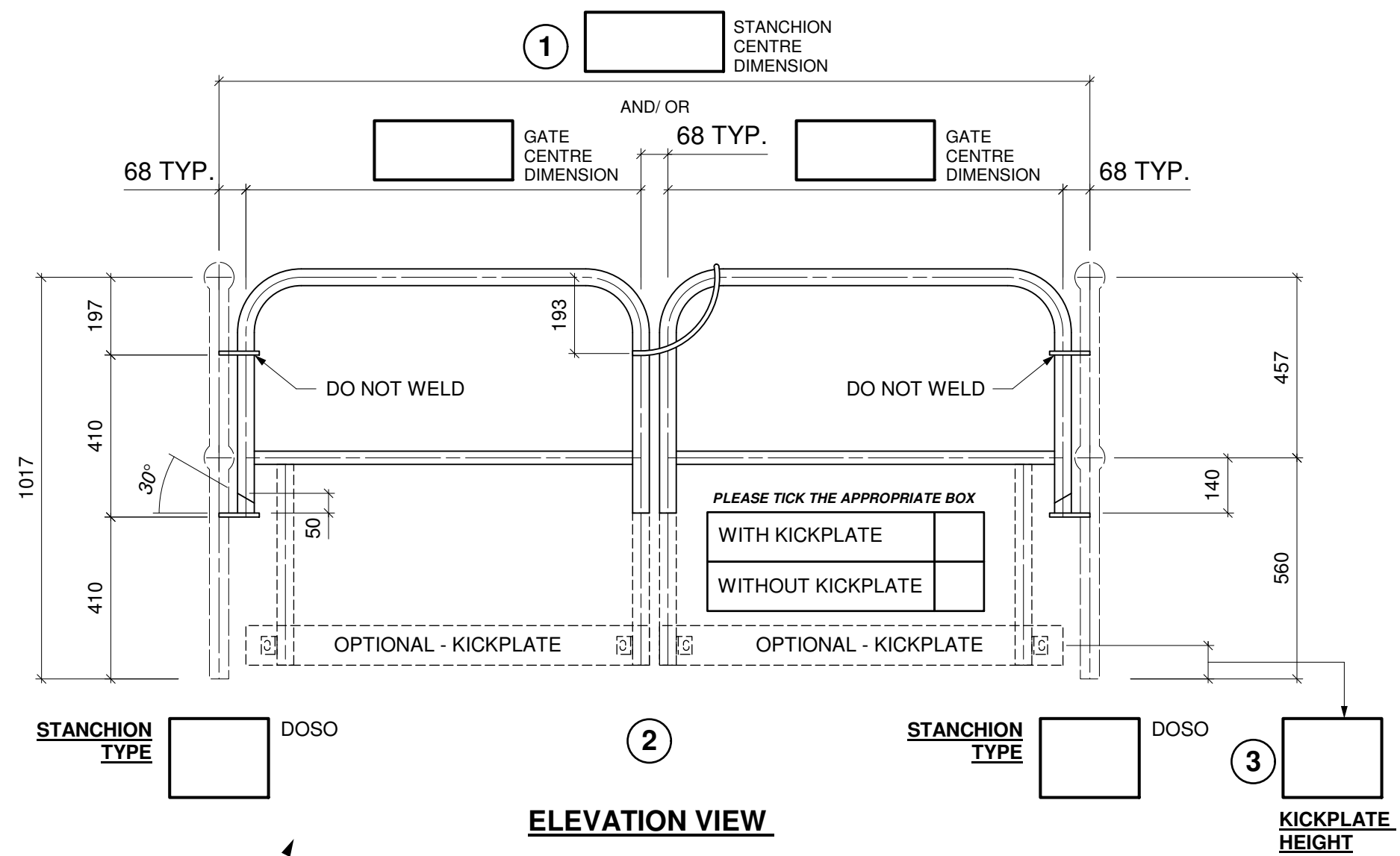


TOP VIEW

OFFICE USE ONLY

WO No.:
PD No.:



ELEVATION VIEW

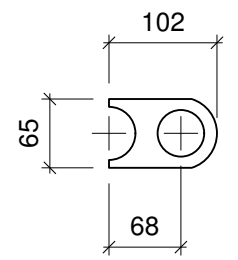
WHAT TO DO?

(PLEASE COMPLETE EACH STEP)

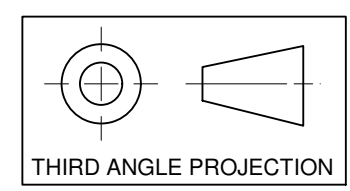
- 1 - PROVIDE DIMENSION FOR STANCHION CENTRES AND/ OR BOTH GATE CENTRES
  - 2 - PROVIDE TYPE OF STANCHION/ S (IF NOT REQUIRED - 'N/A' )  
\*\*THIS DRAWING ONLY ALLOWS FOR 'P', 'P90', 'C' & 'W' ONLY\*\*
  - 3 - IF KICKPLATE IS REQUIRED PLEASE PROVIDE THE HEIGHT OF THE KICKPLATE IN RELATION TO STANCHION/ S  
PLEASE REFER TO THE 'WEBFORGE - ACCESS SYSTEMS' CATALOGUE
  - 4 - TICK THE APPROPRIATE BOX/ BOXES IN RELATION TO THE DIRECTION/ S OF HANDRAIL PIPE/ S
- PROVIDE MATERIAL AND FINISH OF GATE/ S
- NUMBER OF GATE/ S REQUIRED

NOTES:


- 1. HANDRAIL WELDING DETAIL AS PER WEBFORGE STD-101 U.N.O.
- 2. COMPLIANCE WITH AS1657 REQUIRES MINIMUM WIDTH OF 600MM.
- 3. MAXIMUM GATE CENTRE SIZE:
  - WITHOUT KICKPLATE TO BE 1064MM CENTRES
  - WITH KICKPLATE TO BE 864MM CENTRES(REFER TO THE 'WEBFORGE ACCESS SYSTEMS' CATALOGUE)



HINGE DETAIL



THIRD ANGLE PROJECTION

5	NOTES REVISED	TH	13/03/20
4	REVISED DRAWING - PIPE DIRECTION ADDED	JB	30/11/17
3	UPDATED NOTES	JB	09/08/16
REV	PARTICULARS	BY	DATE
<div><div><b>WEBFORGE</b></div><div>A valmont COMPANY</div></div> <div>AUSTRALIA 1300 266 666 www.webforge.com.au info@webforge.com.au</div> <div>NEW ZEALAND 0800 932 367 www.webforge.co.nz info@webforge.co.nz</div>			
CLIENT: WEBFORGE (ANZ)			
JOB: STANDARD SELF CLOSING GATE - DOUBLE			
DETAIL: ORDERING/ FABRICATION DETAILS			
WEBFORGE GRID TYPE	-	SURFACE TREATMENT	-
REQ'N No.			
DRAWN JB	CHK	CUST. O.N.	-
DATE	03/04/15	JOB No.	-
DRAWING No.	STD-SCG-004		
REV.	5		

**DRAWING DISCLAIMER:**  
WEBFORGE PROVIDES THE INFORMATION CONTAINED IN THIS DRAWING AS A GUIDE FOR YOUR INFORMATION ONLY. WEBFORGE HAS TAKEN REASONABLE CARE TO ENSURE THE ACCURACY OF THE INFORMATION AT THE TIME OF PRODUCTION. WEBFORGE EXPRESSLY DISCLAIMS ALL LIABILITY WHATSOEVER FOR (INCLUDING ANY DIRECT OR INDIRECT LOSS OR DAMAGE, COSTS OR EXPENCES HOWSOEVER INCURRED BY ANY PERSON) RELIANCE ON THE WHOLE OR ANY PART OF THE INFORMATION CONTAINED IN OR OMITTED FROM THIS DRAWING. WEBFORGE RESERVES THE RIGHT TO MAKE TECHNICAL CHANGES WITHOUT NOTICE.