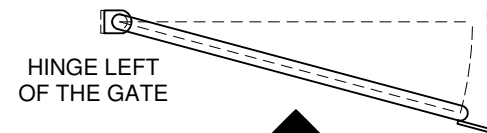


HINGE LEFT  
OF THE GATE



**TOP VIEW**  
ARROW INDICATES PERSON  
STANDING THIS SIDE OF THE GATE

**NE SWING**

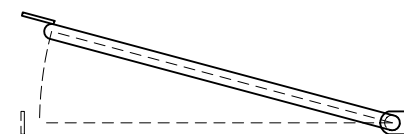


HINGE LEFT  
OF THE GATE



**TOP VIEW**  
ARROW INDICATES PERSON  
STANDING THIS SIDE OF THE GATE

**SE SWING**

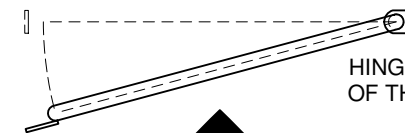


HINGE RIGHT  
OF THE GATE



**TOP VIEW**  
ARROW INDICATES PERSON  
STANDING THIS SIDE OF THE GATE

**NW SWING**



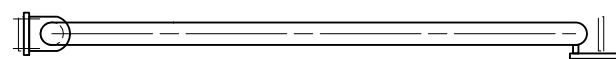
HINGE RIGHT  
OF THE GATE



**TOP VIEW**  
ARROW INDICATES PERSON  
STANDING THIS SIDE OF THE GATE

**SW SWING**

2



**TOP VIEW**

OFFICE USE ONLY

WO No.:

PD No.:

1

INSIDE  
STILE  
DIMENSION

AND/ OR

GATE  
CENTRE  
DIMENSION

53 TYP.

43 TYP.

DO NOT WELD

PLEASE TICK THE APPROPRIATE BOX

WITH KICKPLATE

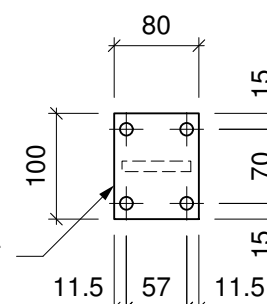
WITHOUT KICKPLATE

OPTIONAL - KICKPLATE

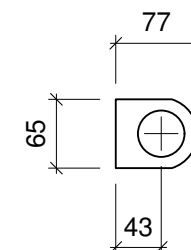
STILE/ S IN RELATION TO THE TOP OF SUPPORT  
STEELWORK

**ELEVATION VIEW**

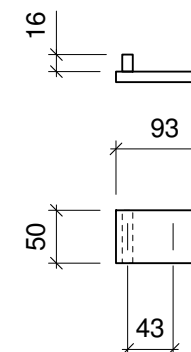
4/ HOLES TO SUIT  
M10 BOLTS



**BOLT PLATE DETAIL**



**HINGE DETAIL**



**STANDARD  
STOPPER DETAIL**

3

KICKPLATE  
HEIGHT

**WHAT TO DO?** (PLEASE COMPLETE EACH STEP)

- 1 - PROVIDE DIMENSION FOR INSIDE STILE/ S AND/ OR GATE CENTRES
- 2 - CIRCLE REQUIRED SWING FOR GATE
- 3 - IF KICKPLATE IS REQUIRED PLEASE PROVIDE THE HEIGHT OF THE KICKPLATE IN RELATION TO STANCHION/ S PLEASE REFER TO THE 'WEBFORGE - ACCESS SYSTEMS' CATALOGUE

- PROVIDE MATERIAL AND FINISH OF GATE/ S

- NUMBER OF GATE/ S REQUIRED

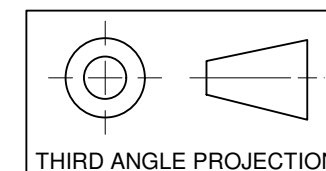
**NOTES:**

1. HANDRAIL WELDING DETAIL AS PER WEBFORGE STD-101 U.N.O.
2. COMPLIANCE WITH AS1657 REQUIRES MINIMUM WIDTH OF 600MM.
3. MAXIMUM GATE CENTRE SIZE:
  - WITHOUT KICKPLATE TO BE 1064MM CENTRES
  - WITH KICKPLATE TO BE 864MM CENTRES(REFER TO THE 'WEBFORGE ACCESS SYSTEMS' CATALOGUE)

1	NOTES REVISED	TH	13/03/20
0	ISSUED FOR PUBLICATION	JB	09/08/16
A	ISSUED FOR APPROVAL	JB	27/07/16
REV	PARTICULARS	BY	DATE
<b>WEBFORGE</b> AUSTRALIA 1300 266 666 NEW ZEALAND 0800 932 367 A valmont COMPANY www.webforge.com.au www.webforge.co.nz info@webforge.com.au info@webforge.co.nz			

CLIENT: WEBFORGE (ANZ)  
JOB: STANDARD SELF CLOSING GATE - BOLTED STILE  
DETAIL: ORDERING/ FABRICATION DETAILS

WEBFORGE GRID TYPE	-	SURFACE TREATMENT	-	REQ'N No.	
DRAWN JB	CHK	CUST. O.N.	-	DRAWING No.	STD-SCG-005
DATE	27/07/16	JOB No.	-	REV.	1



THIRD ANGLE PROJECTION

**DRAWING DISCLAIMER:**  
WEBFORGE PROVIDES THE INFORMATION CONTAINED IN THIS DRAWING AS A GUIDE FOR YOUR INFORMATION ONLY. WEBFORGE HAS TAKEN REASONABLE CARE TO ENSURE THE ACCURACY OF THE INFORMATION AT THE TIME OF PRODUCTION. WEBFORGE EXPRESSLY DISCLAIMS ALL LIABILITY WHATSOEVER FOR (INCLUDING ANY DIRECT OR INDIRECT LOSS OR DAMAGE, COSTS OR EXPENCES HOWSOEVER INCURRED BY ANY PERSON) RELIANCE ON THE WHOLE OR ANY PART OF THE INFORMATION CONTAINED IN OR OMITTED FROM THIS DRAWING. WEBFORGE RESERVES THE RIGHT TO MAKE TECHNICAL CHANGES WITHOUT NOTICE.